



Annual Progress  
Report  
for  
Albert City-Truesdale  
CSD

Published March 2013



## Albert City-Truesdale CSD Board of Education

Bryan Beckman, President  
Deb Clausen, Vice President  
Donald Loving  
Brent Moens  
Jessica Wood

Barbara Kady      Superintendent/Principal

**Albert City-Truesdale CSD**  
**300 Orchard Street**  
**P.O. Box 98**  
**Albert City, IA 50510**

### **We welcome your comments!**

This community report was prepared by the Albert City-Truesdale Community School District. To receive additional copies or for more information, or to comment on this report, call (712) 843-5416.

Dear Parents and Community Members,

The Annual Progress Report is designed to inform the public of our school's progress. It is used to assist in making decisions toward building a stronger place of learning. We are very proud of the accomplishments and growth made by the students.

This report will focus on the 2011-2012 school year. It also includes goals for the future. We encourage parent and citizen input. If you have questions or concerns, please feel free to visit the school or call the number listed above.

The education of children is a community effort. Students face many new challenges each day. The goal of our district is to prepare the children to be able to face those challenges as responsible citizens. We strive to develop the skills they need to make sound decisions.

Join us as we salute the efforts and achievements of the students and honor the hard work of our staff, parents and community.

## Reading

Reading is the foundation for learning. Albert City-Truesdale CSD strives to ensure that all students learn to read well.

The district implements the Reading First Program. Teachers are trained on methods of teaching reading and integrating the concepts into the other subject areas. Resources have been purchased to assist teachers in this endeavor. The Reading Plus Program has been implemented in grades three through six to provide intervention assistance for students.

### **Long-Range Goal:**

All K-6 students will achieve at high levels in reading comprehension, prepared for success throughout his/her life. Albert City-Truesdale Elementary students will decrease the percent of students at the low performance level and increase the percent of students at the intermediate and high performance levels.

### **Annual Improvement Goal for 2011-2012:**

The reading goal for the 2011-2012 school year was to increase the number of students scoring at or above the proficiency level, as indicated on the Iowa Assessments.

The reading goal for the 2011-2012 school year was met. Standard score ranges for 100% of the grade levels including grades three through six in reading are within proficiency ranges as indicated on the 2012 Iowa Assessments.

### **Annual Improvement Goal for 2012-2013:**

The reading goal for the 2012-2013 school year is to increase the number of students scoring at or above the proficiency level, as indicated on the Iowa Assessments

### **Action Plan to Meet the Goal:**

- Continue to study the data collected from the Basic Reading Inventory, PAT, PPVT and the DSA;
- Evaluate resources used within the district;
- Continue using interventions to address the needs of the individual student;
- Implement the Reading Plus intervention program for students not meeting proficiency levels;
- Provide Title I intervention services to students not scoring at the proficiency levels.



## Math

Math is used in so many aspects of our daily lives that it is important for students to develop and master math skills to succeed. We strive to find resources and concepts that will enhance the delivery of our math program.

### **Long-Range Goal:**

All K-6 students will achieve at high levels in mathematics, prepared for success throughout his/her life. Albert City Truesdale Elementary School students will increase the percent of students at the high performance level as indicated on the Iowa Assessments.

### **Annual Improvement Goal for 2011-2012:**

The mathematics goal for the 2011-2012 school year was to increase the number of students scoring at or above the proficiency level, as indicated on the ITBS.

The mathematics goal for the 2011-2012 school year was met. Standard scores for 100% of the grades levels in mathematics fall within the proficiency ranges as provided through grades three through six on the 2012 Iowa Assessments, formerly known as the Iowa Test of Basic Skills.

### **Annual Improvement Goal for 2012-2013:**

The mathematics goal for the 2012-2013 school year is to increase the number of students scoring at or above the proficiency level, as indicated on the Iowa Assessments.

### **Action Plan to Meet the Goal:**

- Collect data on cohort groups for analysis and monitoring
- Study the trends, identify specific math skills to target and find proven interventions for implementation
- Provide Title I intervention assistance to students not meeting proficiency levels.
- Engage in teacher in-service centered on the implementation of the Common Core Curriculum.

## **Average Daily Attendance**

PK through grade 6 daily attendance for the 2011-2012 school year was 94.73%.

## **Other Locally Determined Indicators**

The Iowa Collaborative Assessment Modules for reading comprehension and mathematics problem solving are administered to grade 4 students. Results are analyzed to determine strengths and to identify areas in need of improvement.

Character Counts is reinforced at all grade levels in the building. The program is reinforced by all staff members throughout the daily schedule.

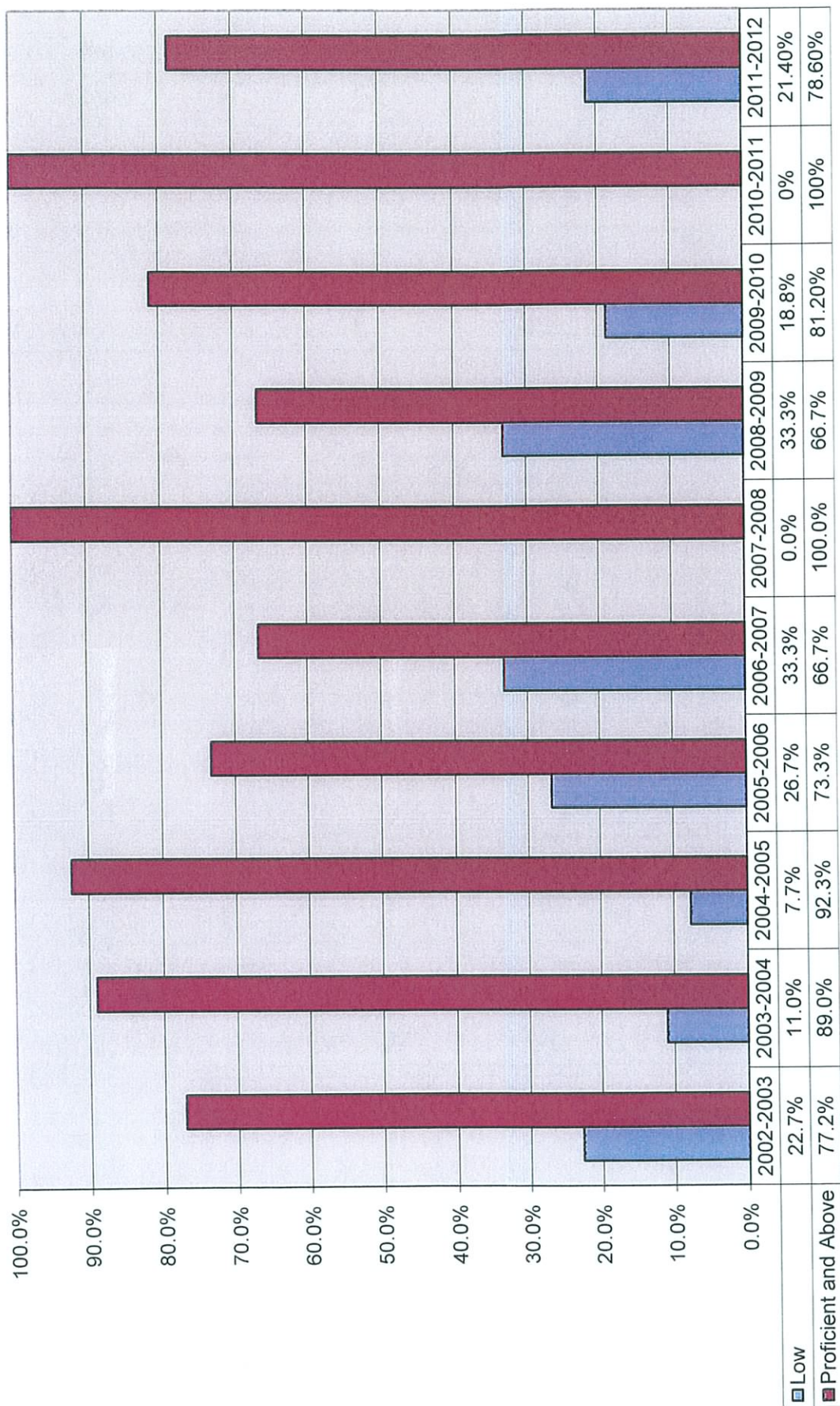
Teachers are receiving training on the implementation of the Common Core Curriculum. Portions of the mathematics curriculum are being taught through the investigations method. New textbooks and accompanying resources were purchased prior to the 2007-2008 school year. Teachers and the administration are aligning the AC-T curriculum with the Common Core Curriculum. Albert City-Truesdale is no longer funded under the Reading First Grant. However, Reading First strategies are imbedded in reading instruction at Albert City-Truesdale. As such, student achievement in the area of reading is closely monitored. The Reading Plus Program provides additional data regarding student reading progress and areas of difficulty. Title I services are available for students needing interventions in the areas of reading and math.

## **Early Intervention Goal**

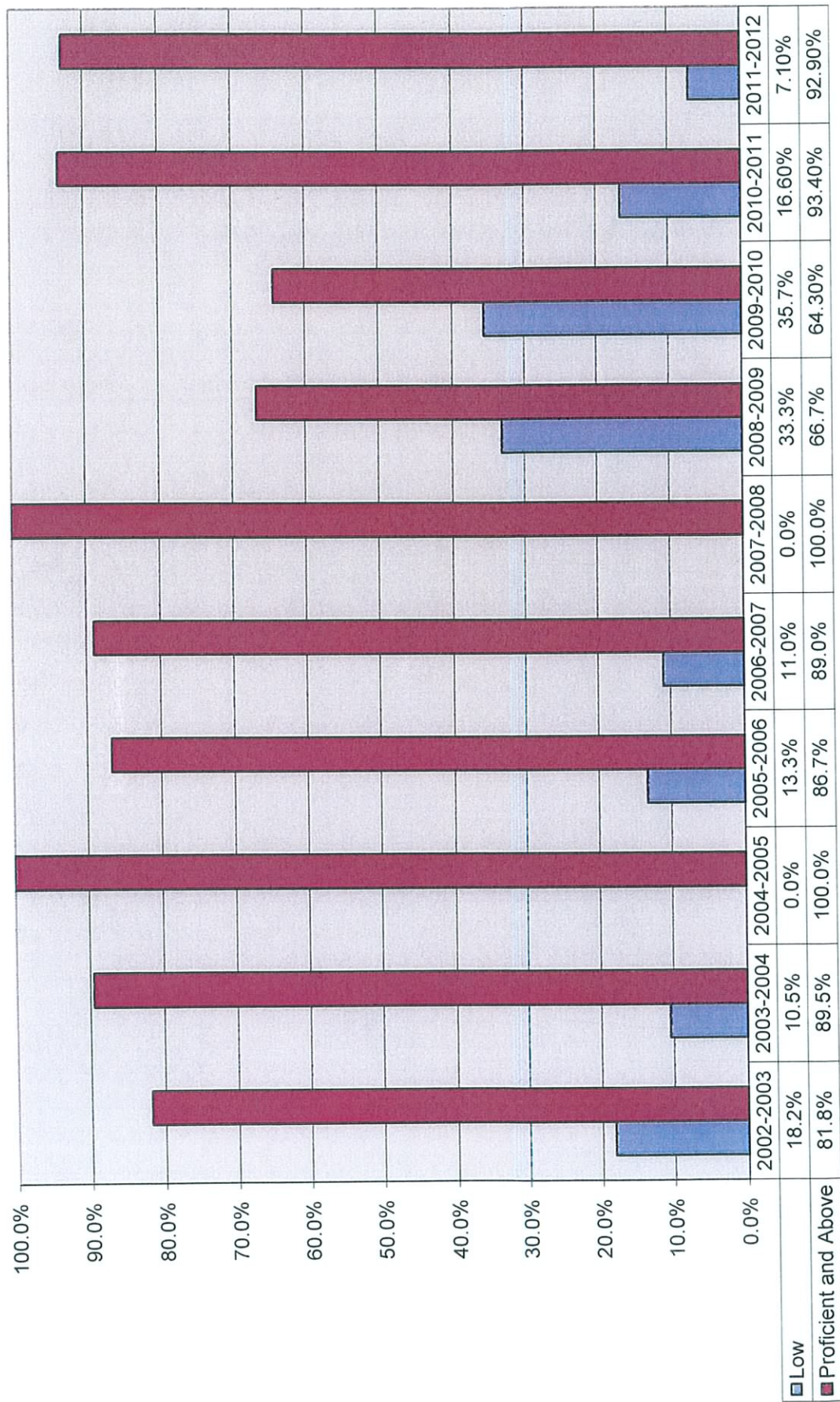
The early intervention goal at Albert City-Truesdale is: Students in grades K-3 will continue to maintain low student to adult ratio with the utilization of certified and non certified personnel.



Grade 4 ICAM Reading Comprehension

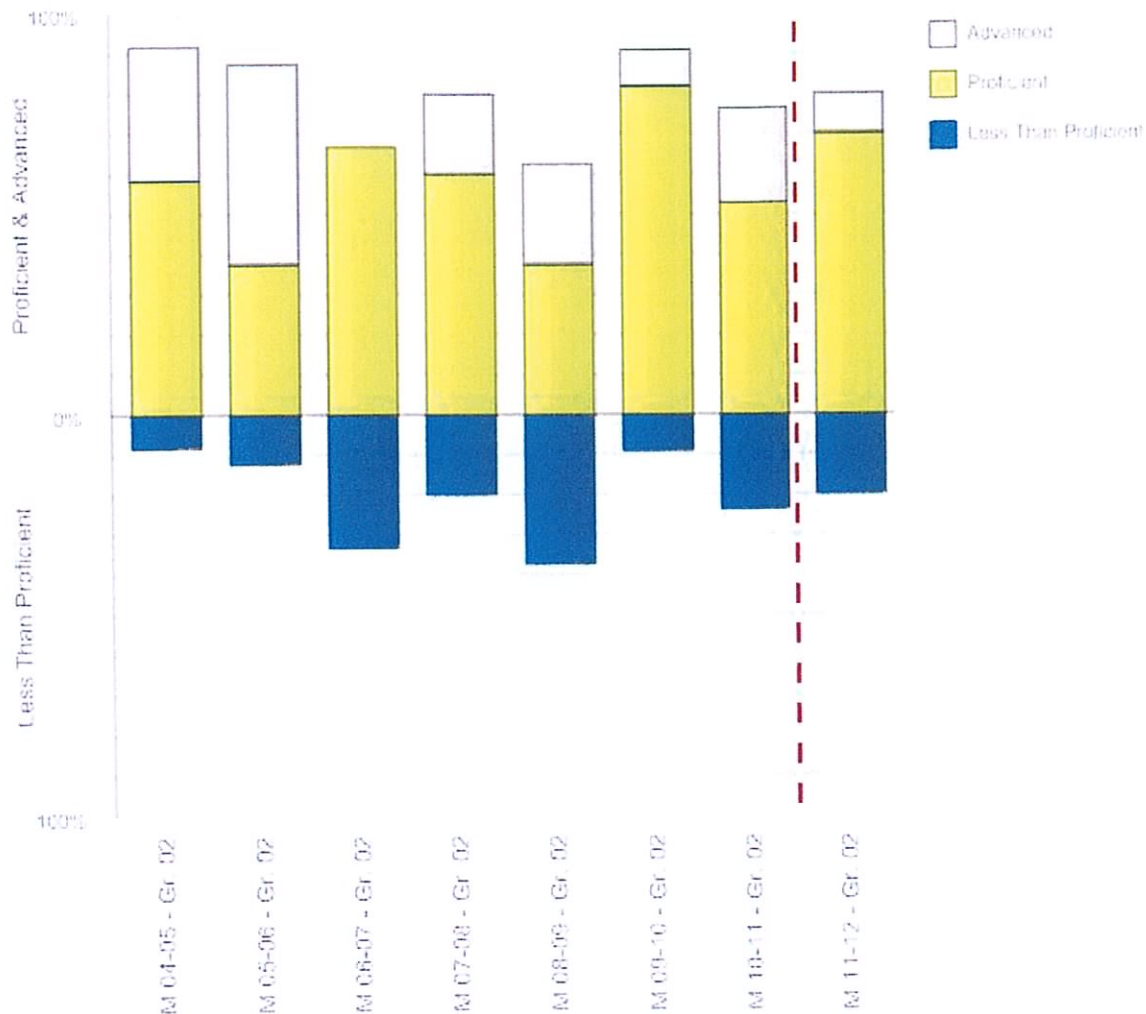


**Grade 4 ICAM Math Problem Solving Strategies and Process**





Three Level Proficiency Graph  
 Albert City-Truesdale Elementary  
 IA Reading & ITBS/ITED Reading Comprehension  
 Grade 02



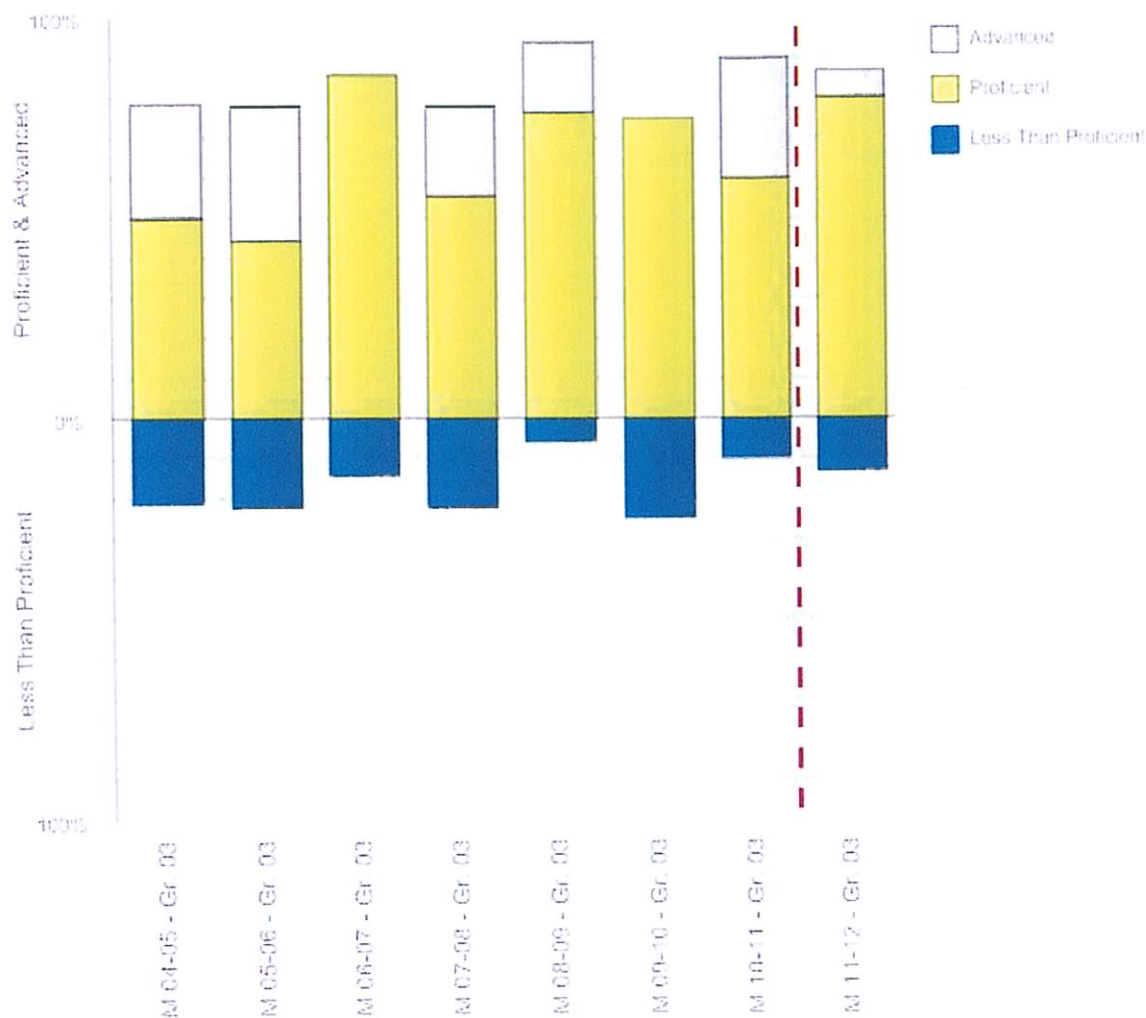
The red dashed lines represent a transition between versions of this test. Trends across the lines should be interpreted with caution. Please refer to support materials for these tests for more information on the specific changes and appropriate interpretation of these test results.

F=Fall M=Midyear S=Spring

Test Name	Year/Grade	Less Than			Total
		Proficient	Proficient	Advanced	
ITBS/ITED Reading Comprehension	M 04-05 - Gr. 02	8.3%	58.3%	33.3%	12
ITBS/ITED Reading Comprehension	M 05-06 - Gr. 02	12.5%	37.5%	50.0%	8
ITBS/ITED Reading Comprehension	M 06-07 - Gr. 02	33.3%	66.7%	0.0%	12
ITBS/ITED Reading Comprehension	M 07-08 - Gr. 02	20.0%	60.0%	20.0%	15
ITBS/ITED Reading Comprehension	M 08-09 - Gr. 02	37.5%	37.5%	25.0%	8



Three Level Proficiency Graph  
 Albert City-Truesdale Elementary  
 IA Reading & ITBS/ITED Reading Comprehension  
 Grade 03

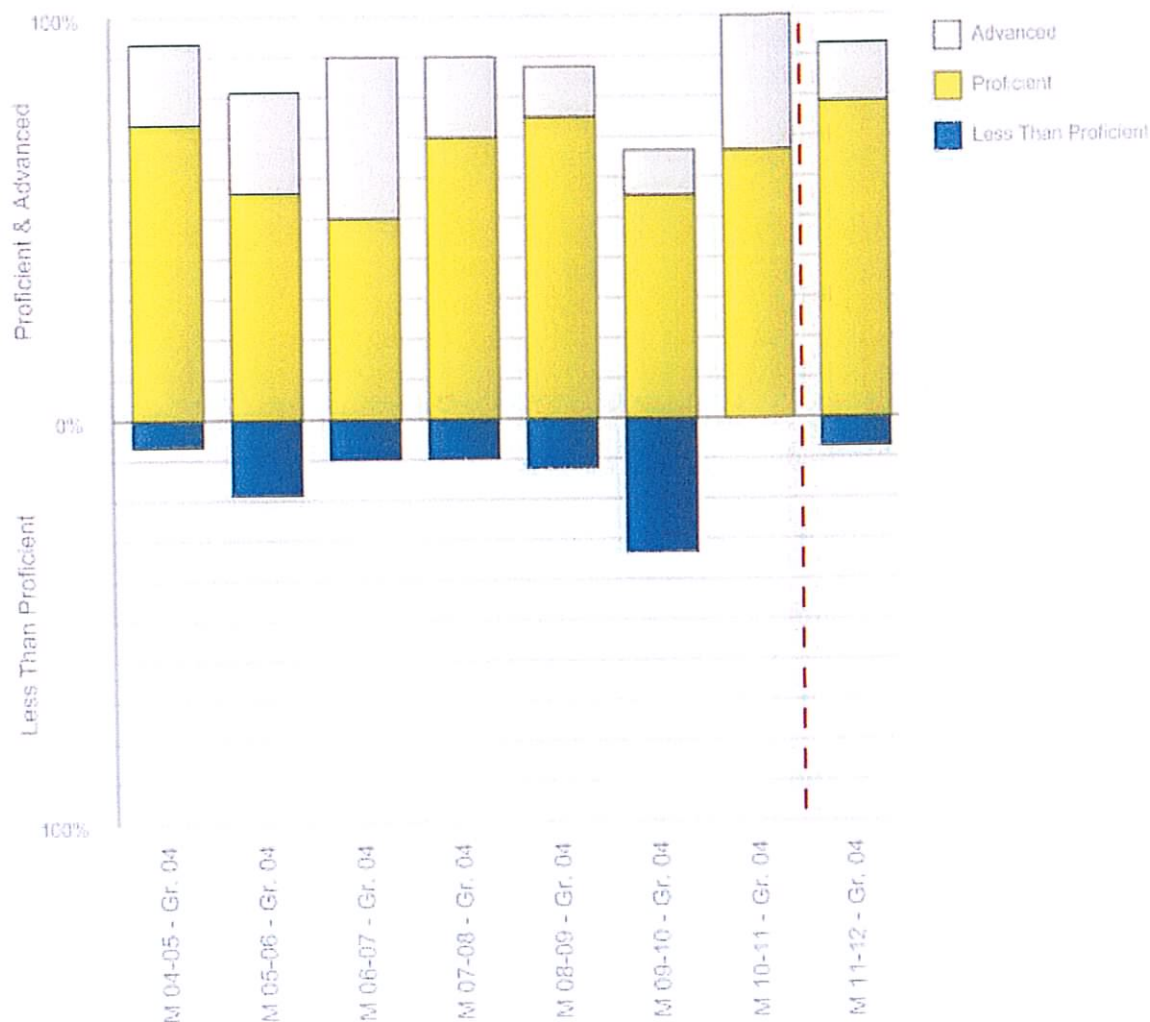


The red dashed lines represent a transition between versions of this test. Trends across the lines should be interpreted with caution. Please refer to [support materials](#) for these tests for more information on the specific changes and appropriate interpretation of these test results.

F=Fall M=Midyear S=Spring

Test Name	Year/Grade	Less Than Proficient	Proficient	Advanced	Total
ITBS/ITED Reading Comprehension	M 04-05 - Gr. 03	21.4%	50.0%	28.6%	14
ITBS/ITED Reading Comprehension	M 05-06 - Gr. 03	22.2%	44.4%	33.3%	9
ITBS/ITED Reading Comprehension	M 06-07 - Gr. 03	14.3%	85.7%	0.0%	7
ITBS/ITED Reading Comprehension	M 07-08 - Gr. 03	22.2%	55.6%	22.2%	9
ITBS/ITED Reading Comprehension	M 08-09 - Gr. 03	5.9%	76.5%	17.6%	17

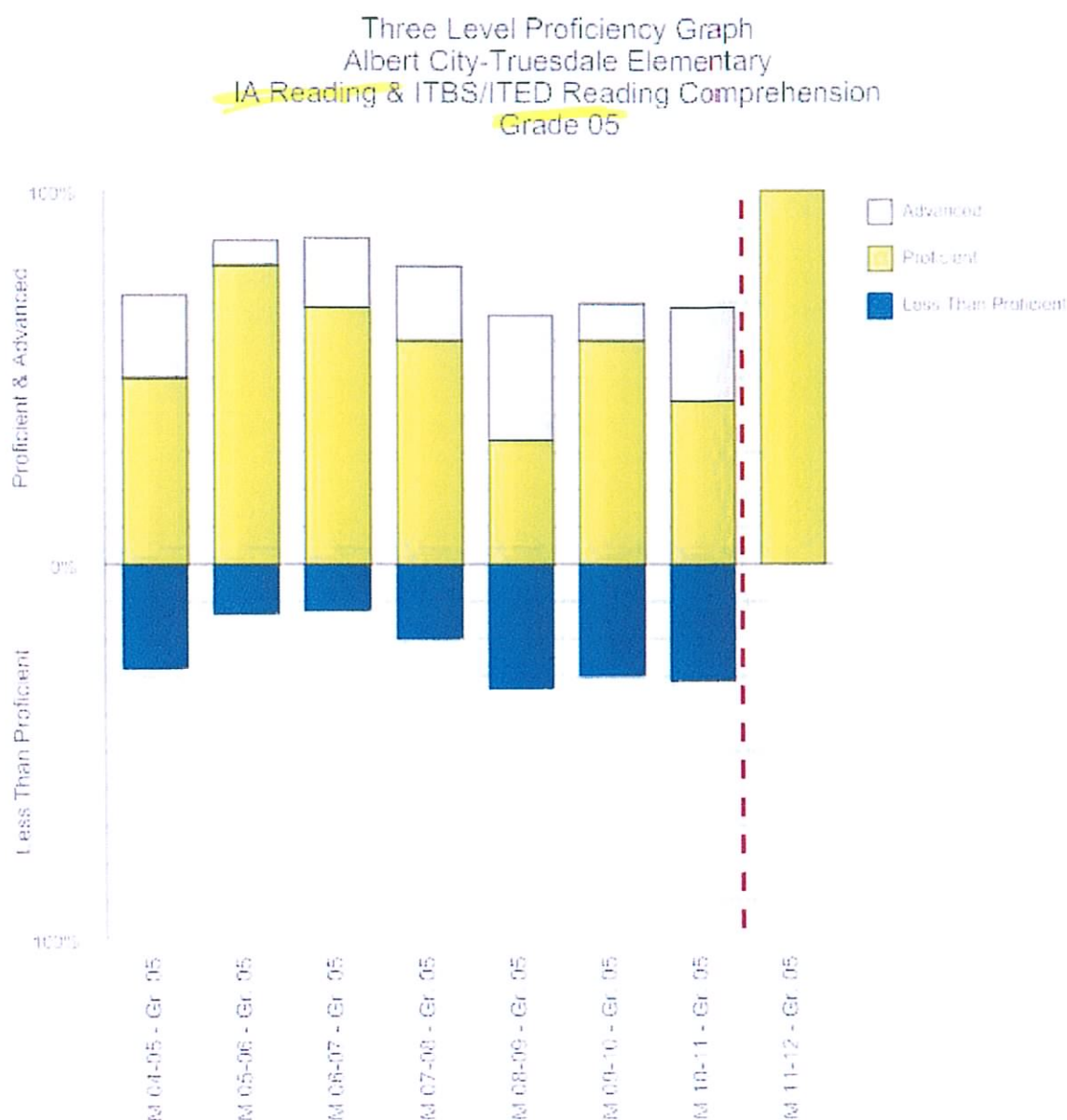
Three Level Proficiency Graph  
 Albert City-Truesdale Elementary  
 IA Reading & ITBS/ITED Reading Comprehension  
 Grade 04



The red dashed lines represent a transition between versions of this test. Trends across the lines should be interpreted with caution. Please refer to support materials for these tests for more information on the specific changes and appropriate interpretation of these test results.

F=Fall M=Midyear S=Spring

Test Name	Year/Grade	Less Than Proficient	Proficient	Advanced	Total
ITBS/ITED Reading Comprehension	M 04-05 - Gr. 04	6.7%	73.3%	20.0%	15
ITBS/ITED Reading Comprehension	M 05-06 - Gr. 04	18.8%	56.3%	25.0%	16
ITBS/ITED Reading Comprehension	M 06-07 - Gr. 04	10.0%	50.0%	40.0%	10
ITBS/ITED Reading Comprehension	M 07-08 - Gr. 04	10.0%	70.0%	20.0%	10
ITBS/ITED Reading Comprehension	M 08-09 - Gr. 04	12.5%	75.0%	12.5%	8



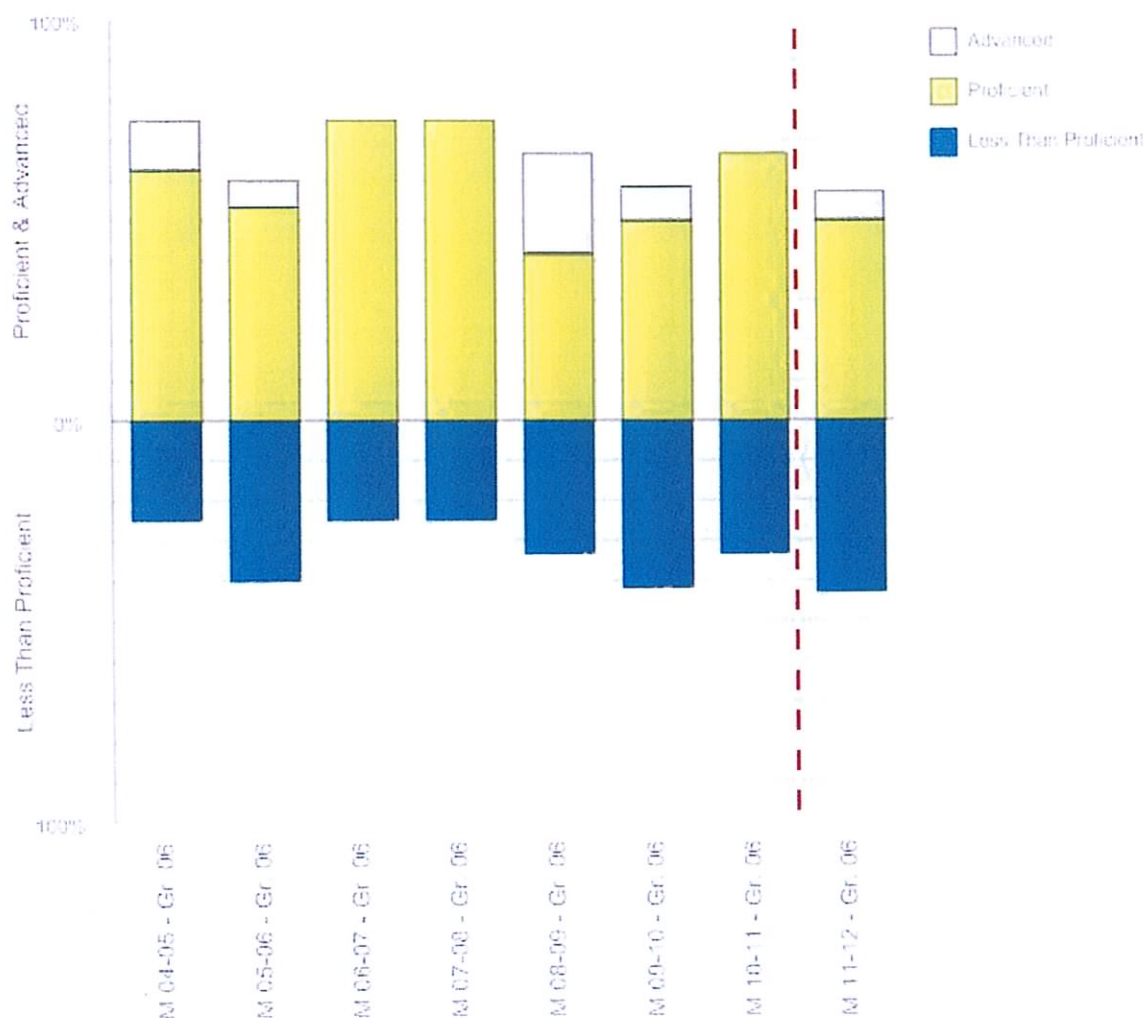
The red dashed lines represent a transition between versions of this test. Trends across the lines should be interpreted with caution. Please refer to support materials for these tests for more information on the specific changes and appropriate interpretation of these test results.

F=Fall M=Midyear S=Spring

Test Name	Year/Grade	Less Than Proficient	Proficient	Advanced	Total
ITBS/ITED Reading Comprehension	M 04-05 - Gr. 05	27.8%	50.0%	22.2%	18
ITBS/ITED Reading Comprehension	M 05-06 - Gr. 05	13.3%	80.0%	6.7%	15
ITBS/ITED Reading Comprehension	M 06-07 - Gr. 05	12.5%	68.8%	18.8%	16
ITBS/ITED Reading Comprehension	M 07-08 - Gr. 05	20.0%	60.0%	20.0%	10
ITBS/ITED Reading Comprehension	M 08-09 - Gr. 05	33.3%	33.3%	33.3%	9



Three Level Proficiency Graph  
 Albert City-Truesdale Elementary  
 IA Reading & ITBS/ITED Reading Comprehension  
 Grade 06

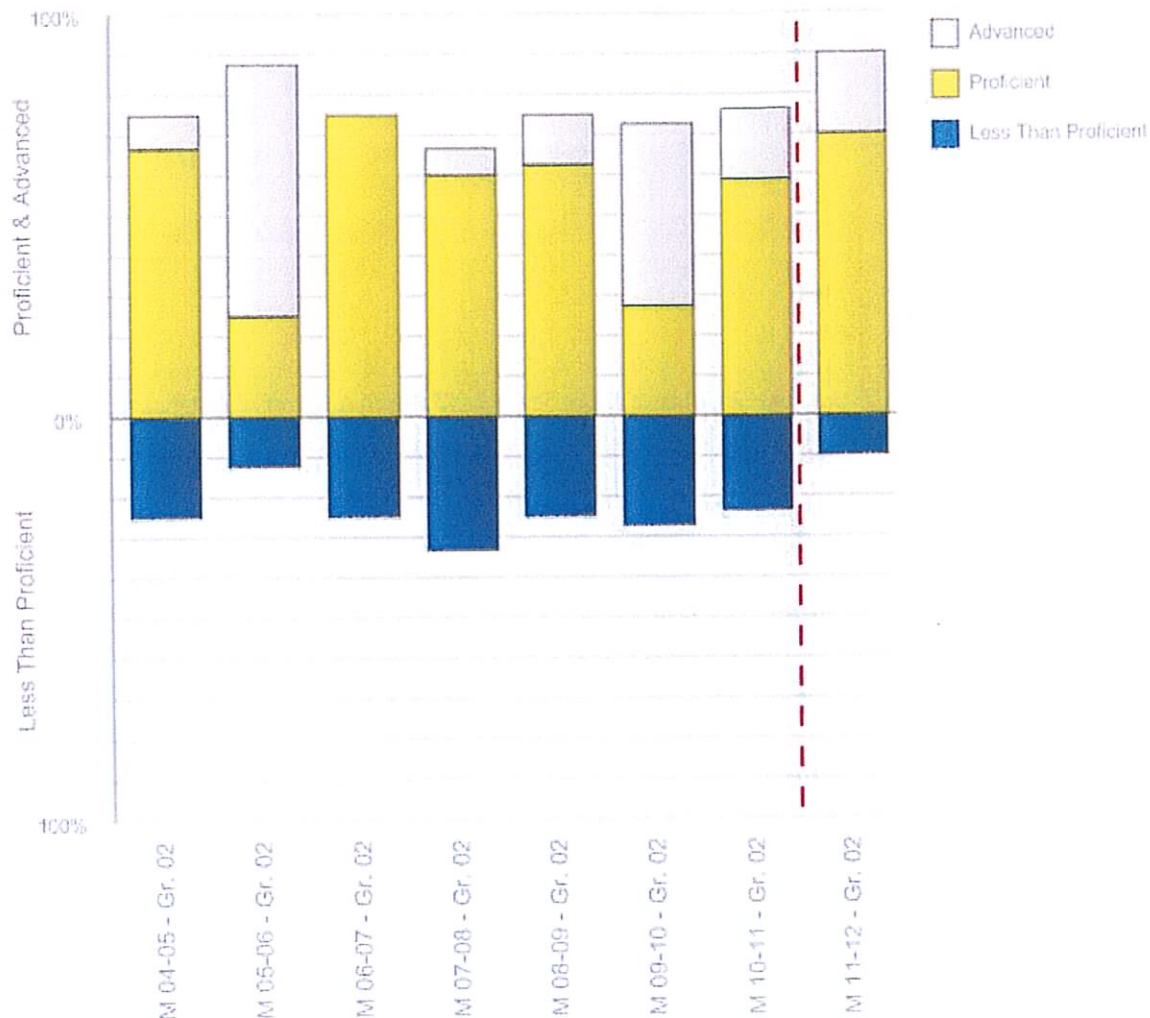


The red dashed lines represent a transition between versions of this test. Trends across the lines should be interpreted with caution. Please refer to support materials for these tests for more information on the specific changes and appropriate interpretation of these test results.

F=Fall M=Midyear S=Spring

Test Name	Year/Grade	Less Than Proficient	Proficient	Advanced	Total
ITBS/ITED Reading Comprehension	M 04-05 - Gr. 06	25.0%	62.5%	12.5%	16
ITBS/ITED Reading Comprehension	M 05-06 - Gr. 06	40.0%	53.3%	6.7%	15
ITBS/ITED Reading Comprehension	M 06-07 - Gr. 06	25.0%	75.0%	0.0%	12
ITBS/ITED Reading Comprehension	M 07-08 - Gr. 06	25.0%	75.0%	0.0%	16
ITBS/ITED Reading Comprehension	M 08-09 - Gr. 06	33.3%	41.7%	25.0%	12

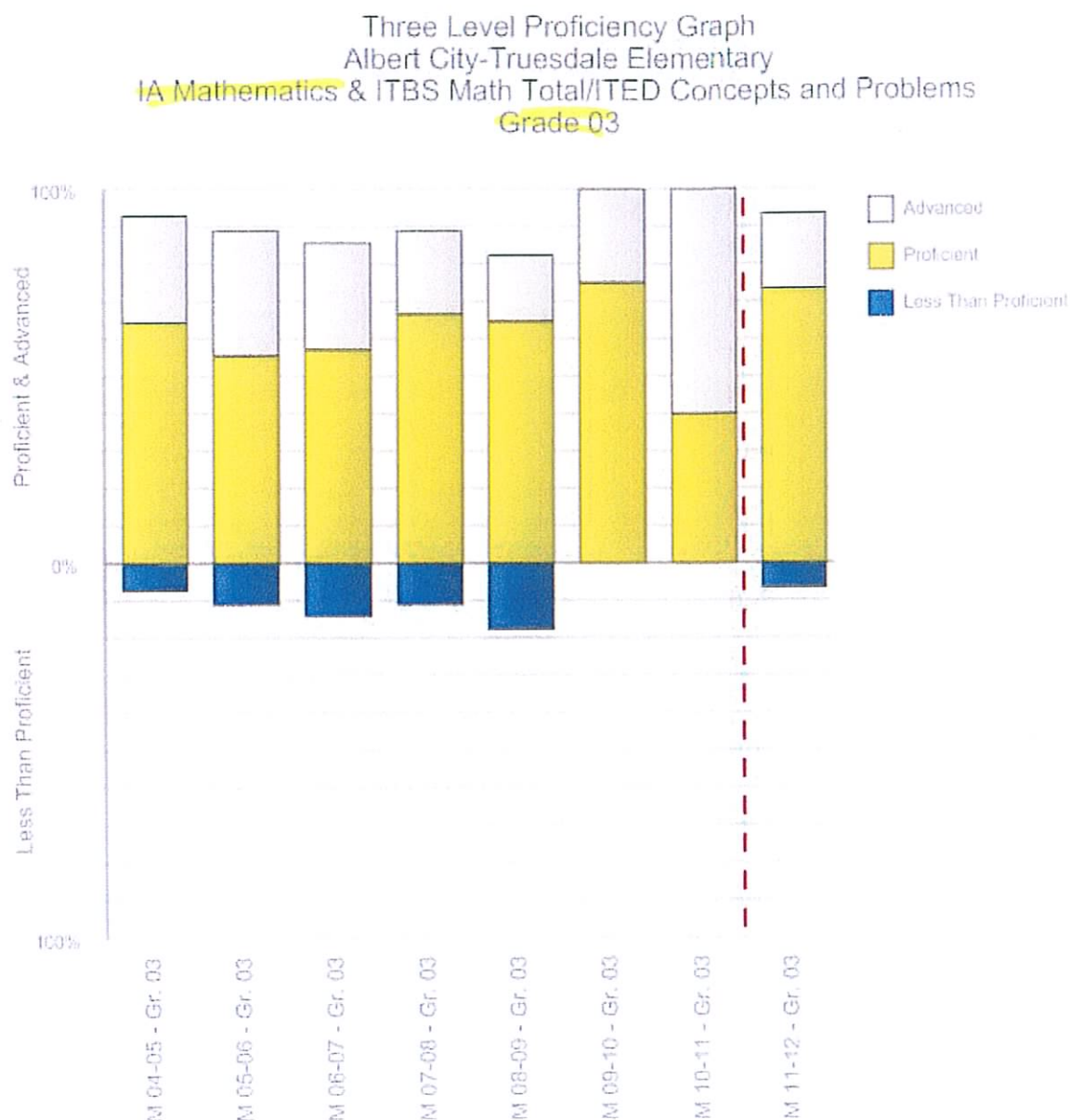
Three Level Proficiency Graph  
 Albert City-Truesdale Elementary  
 IA Mathematics & ITBS Math Total/ITED Concepts and Problems  
 Grade 02



The red dashed lines represent a transition between versions of this test. Trends across the lines should be interpreted with caution. Please refer to support materials for these tests for more information on the specific changes and appropriate interpretation of these test results.

F=Fall M=Midyear S=Spring

Test Name	Year/Grade	Less Than Proficient	Proficient	Advanced	Total
ITBS Math Total/ITED Concepts and Problems	M 04-05 - Gr. 02	25.0%	66.7%	8.3%	12
ITBS Math Total/ITED Concepts and Problems	M 05-06 - Gr. 02	12.5%	25.0%	62.5%	8
ITBS Math Total/ITED Concepts and Problems	M 06-07 - Gr. 02	25.0%	75.0%	0.0%	12
ITBS Math Total/ITED Concepts and Problems	M 07-08 - Gr. 02	33.3%	60.0%	6.7%	15
ITBS Math Total/ITED Concepts and Problems	M 08-09 - Gr. 02	25.0%	62.5%	12.5%	8

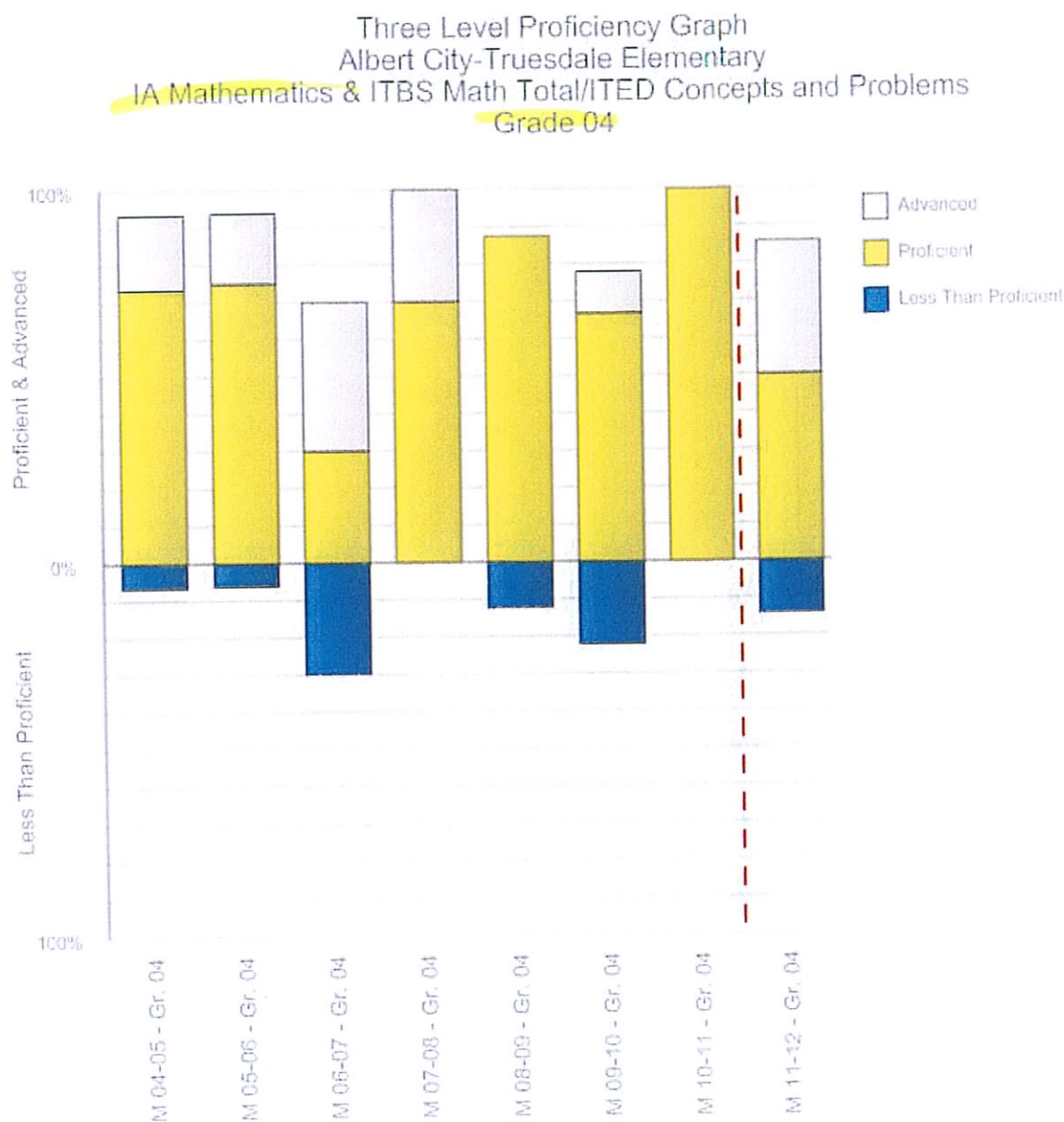


The red dashed lines represent a transition between versions of this test. Trends across the lines should be interpreted with caution. Please refer to support materials for these tests for more information on the specific changes and appropriate interpretation of these test results.

F=Fall M=Midyear S=Spring

Test Name	Year/Grade	Less Than Proficient	Proficient	Advanced	Total
ITBS Math Total/ITED Concepts and Problems	M 04-05 - Gr. 03	7.1%	64.3%	28.6%	14
ITBS Math Total/ITED Concepts and Problems	M 05-06 - Gr. 03	11.1%	55.6%	33.3%	9
ITBS Math Total/ITED Concepts and Problems	M 06-07 - Gr. 03	14.3%	57.1%	28.6%	7
ITBS Math Total/ITED Concepts and Problems	M 07-08 - Gr. 03	11.1%	66.7%	22.2%	9
ITBS Math Total/ITED Concepts and Problems	M 08-09 - Gr. 03	17.6%	64.7%	17.6%	17



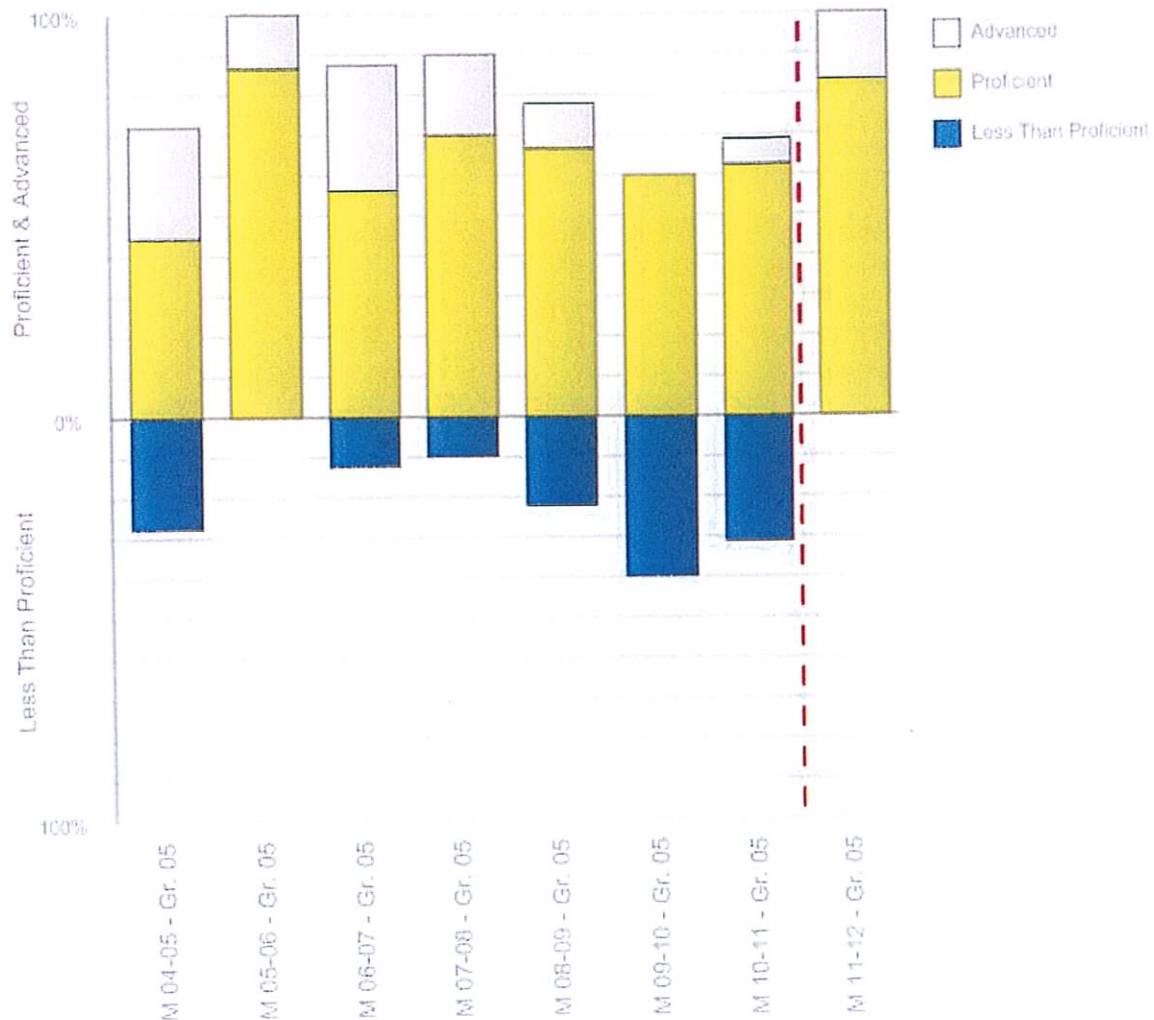


The red dashed lines represent a transition between versions of this test. Trends across the lines should be interpreted with caution. Please refer to support materials for these tests for more information on the specific changes and appropriate interpretation of these test results.

F=Fall M=Midyear S=Spring

Test Name	Year/Grade	Less Than Proficient	Proficient	Advanced	Total
ITBS Math Total/ITED Concepts and Problems	M 04-05 - Gr. 04	6.7%	73.3%	20.0%	15
ITBS Math Total/ITED Concepts and Problems	M 05-06 - Gr. 04	6.3%	75.0%	18.8%	16
ITBS Math Total/ITED Concepts and Problems	M 06-07 - Gr. 04	30.0%	30.0%	40.0%	10
ITBS Math Total/ITED Concepts and Problems	M 07-08 - Gr. 04	0.0%	70.0%	30.0%	10
ITBS Math Total/ITED Concepts and Problems	M 08-09 - Gr. 04	12.5%	87.5%	0.0%	8

Three Level Proficiency Graph  
Albert City-Truesdale Elementary  
IA Mathematics & ITBS Math Total/ITED Concepts and Problems  
Grade 05

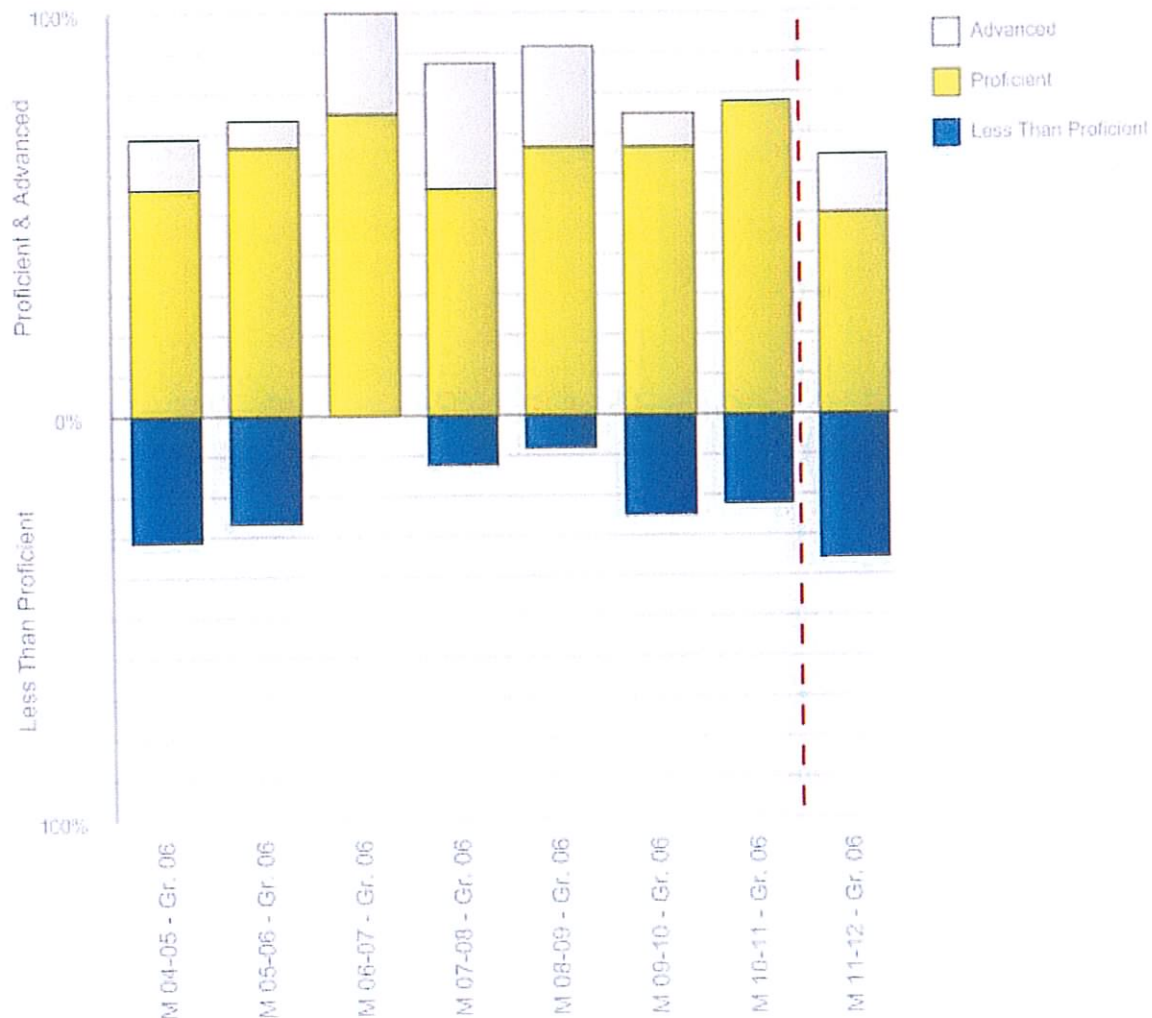


The red dashed lines represent a transition between versions of this test. Trends across the lines should be interpreted with caution. Please refer to support materials for these tests for more information on the specific changes and appropriate interpretation of these test results.

F=Fall M=Midyear S=Spring

Test Name	Year/Grade	Less Than Proficient	Proficient	Advanced	Total
ITBS Math Total/ITED Concepts and Problems	M 04-05 - Gr. 05	27.8%	44.4%	27.8%	18
ITBS Math Total/ITED Concepts and Problems	M 05-06 - Gr. 05	0.0%	86.7%	13.3%	15
ITBS Math Total/ITED Concepts and Problems	M 06-07 - Gr. 05	12.5%	56.3%	31.3%	16
ITBS Math Total/ITED Concepts and Problems	M 07-08 - Gr. 05	10.0%	70.0%	20.0%	10
ITBS Math Total/ITED Concepts and Problems	M 08-09 - Gr. 05	22.2%	66.7%	11.1%	9

Three Level Proficiency Graph  
 Albert City-Truesdale Elementary  
 IA Mathematics & ITBS Math Total/ITED Concepts and Problems  
 Grade 06



The red dashed lines represent a transition between versions of this test. Trends across the lines should be interpreted with caution. Please refer to support materials for these tests for more information on the specific changes and appropriate interpretation of these test results.

F=Fall M=Midyear S=Spring

Test Name	Year/Grade	Less Than Proficient	Proficient	Advanced	Total
ITBS Math Total/ITED Concepts and Problems	M 04-05 - Gr. 06	31.3%	56.3%	12.5%	16
ITBS Math Total/ITED Concepts and Problems	M 05-06 - Gr. 06	26.7%	66.7%	6.7%	15
ITBS Math Total/ITED Concepts and Problems	M 06-07 - Gr. 06	0.0%	75.0%	25.0%	12
ITBS Math Total/ITED Concepts and Problems	M 07-08 - Gr. 06	12.5%	56.3%	31.3%	16
ITBS Math Total/ITED Concepts and Problems	M 08-09 - Gr. 06	8.3%	66.7%	25.0%	12