

Annual Progress
Report
for
Albert City-
Truesdale CSD

Published Fall 2011



Albert City-Truesdale CSD Board of Education

Brent Moens, President
Deb Clausen, Vice President
Bryan Beckman
Tim Bruns
Jessica Wood

Barbara Kady
Superintendent/Principal

**Albert City-Truesdale CSD
300 Orchard Street
P.O. Box 98
Albert City, IA 50510**

We welcome your comments!

This community report was prepared by the Albert City-Truesdale Community School District.

To receive additional copies or for more information, or to comment on this report, call (712) 843-5416.

Dear Parents and Community Members,

The Annual Progress Report is designed to inform the public of our school's progress. It is used to assist in making decisions toward building a stronger place of learning. We are very proud of the accomplishments and growth made by the students.

This report will focus on the 2010-2011 school year. It also includes goals for the future. We encourage parent and citizen input. If you have questions or concerns, please feel free to visit the school or call the number listed above.

The education of children is a community effort. Students face many new challenges each day. The goal of our district is to prepare the children to be able to face those challenges as responsible citizens. We strive to develop the skills they need to make sound decisions.

Join us as we salute the efforts and achievements of the students and honor the hard work of our staff, parents and community.

Reading

Reading is the foundation for learning. Albert City-Truesdale CSD strives to ensure that all students learn to read well.

The district implements the Reading First Program. Teachers are trained on methods of teaching reading and integrating the concepts into the other subject areas. Resources have been purchased to assist teachers in this endeavor. The Reading Plus Program has been implemented in grades three through six to provide intervention assistance for students.

Long-Range Goal:

All K-6 students will achieve at high levels in reading comprehension, prepared for success throughout his/her life. Albert City-Truesdale Elementary students will decrease the percent of students at the low performance level and increase the percent of students at the intermediate and high performance levels.

Annual Improvement Goal for 2010-2011:

The reading goal for the 2010-2011 school year was to increase the number of students scoring at or above the proficiency level, as indicated on the ITBS.

The reading goal for the 2010-2011 school year was met. The proficiency level in 2009-2010 was 68%. In 2010-2011 the proficiency level was 85.3%.

Annual Improvement Goal for 2011-2012:

The reading goal for the 2011-2012 school year is to increase the number of students scoring at or above the proficiency level, as indicated on the ITBS.

Action Plan to Meet the Goal:

- Continue to study the data collected from the Basic Reading Inventory, PPVT and the DSA
- Evaluate resources used within the district
- Continue using interventions to address the needs of the individual student
- Implement the Reading Plus intervention program for students not meeting proficiency levels.
- Provide Title I intervention services to students not scoring at the proficiency levels.

Math

Math is used in so many aspects of our daily lives that it is important for students to develop and master math skills to succeed. We strive to find resources and concepts that will enhance the delivery of our math program.

Long-Range Goal:

All K-6 students will achieve at high levels in mathematics, prepared for success throughout his/her life. Albert City Truesdale Elementary School students will increase the percent of students at the high performance level as indicated on the Iowa Test of Basic Skills.

Annual Improvement Goal for 2010-2011:

The mathematics goal for the 2010-2011 school year was to increase the number of students scoring at or above the proficiency level, as indicated on the ITBS.

The mathematics goal for the 2010-2011 school year was met. The percentage of students scoring at the proficiency level in 2009-2010 was 75%. In 2010-2011 the percentage of students scoring at the proficiency level was 85.3%.

Annual Improvement Goal for 2011-2012:

The mathematics goal for the 2011-2012 school year is to increase the number of students scoring at or above the proficiency level, as indicated on the ITBS.

Action Plan to Meet the Goal:

- Collect data on cohort groups for analysis and monitoring
- Study the trends, identify specific math skills to target and find proven interventions for implementation
- Provide title I intervention assistance to students not meeting proficiency levels.
- Engage in teacher in-service centered on the characteristics of effective instruction in relation to the implementation of the Iowa Core Curriculum.

Average Daily Attendance

PK through grade 6 daily attendance for the 2010-2011 school year was 95.4%.

Other Locally Determined Indicators

The Iowa Collaborative Assessment Modules for reading comprehension and mathematics problem solving are administered to grade 4 students. Results are analyzed to determine strengths and to identify areas in need of improvement.

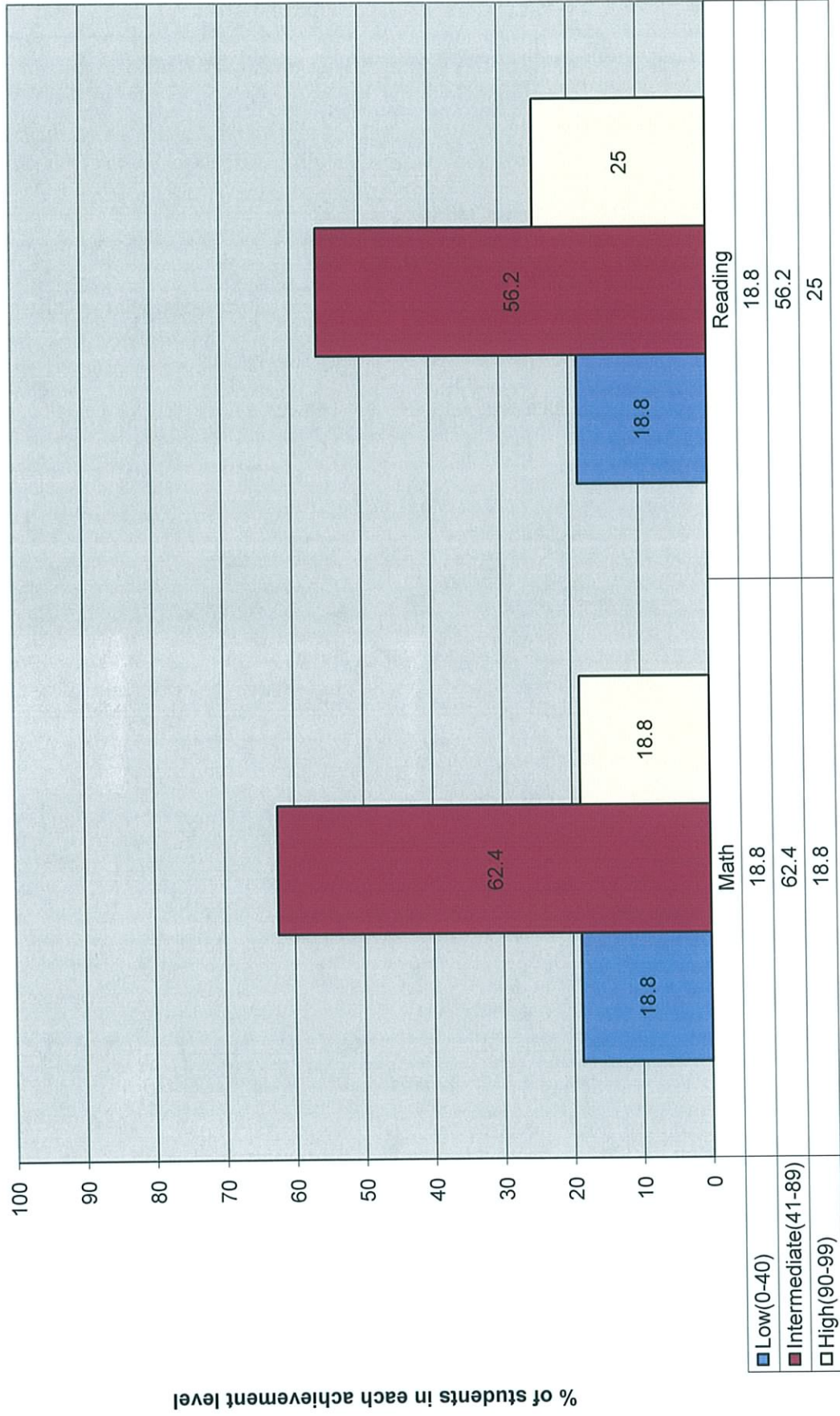
Character Counts is taught at all grade levels in the building. The program is reinforced by all staff members throughout the daily schedule.

Teachers are receiving training on the characteristics of effective instruction. Portions of the mathematics curriculum are being taught through the investigations method. New textbooks and accompanying resources were purchased prior to the 2007-2008 school year. Teachers and the administration are aligning the AC-T curriculum with the common core curriculum. Albert City-Truesdale is no longer funded under the Reading First Grant. However, Reading First strategies are imbedded in reading instruction at Albert City-Truesdale. As such, student achievement in the area of reading is closely monitored. The Reading Plus Program provides additional data regarding student reading progress and areas of difficulty. Title I services are available for students needing interventions in the areas of reading and math.

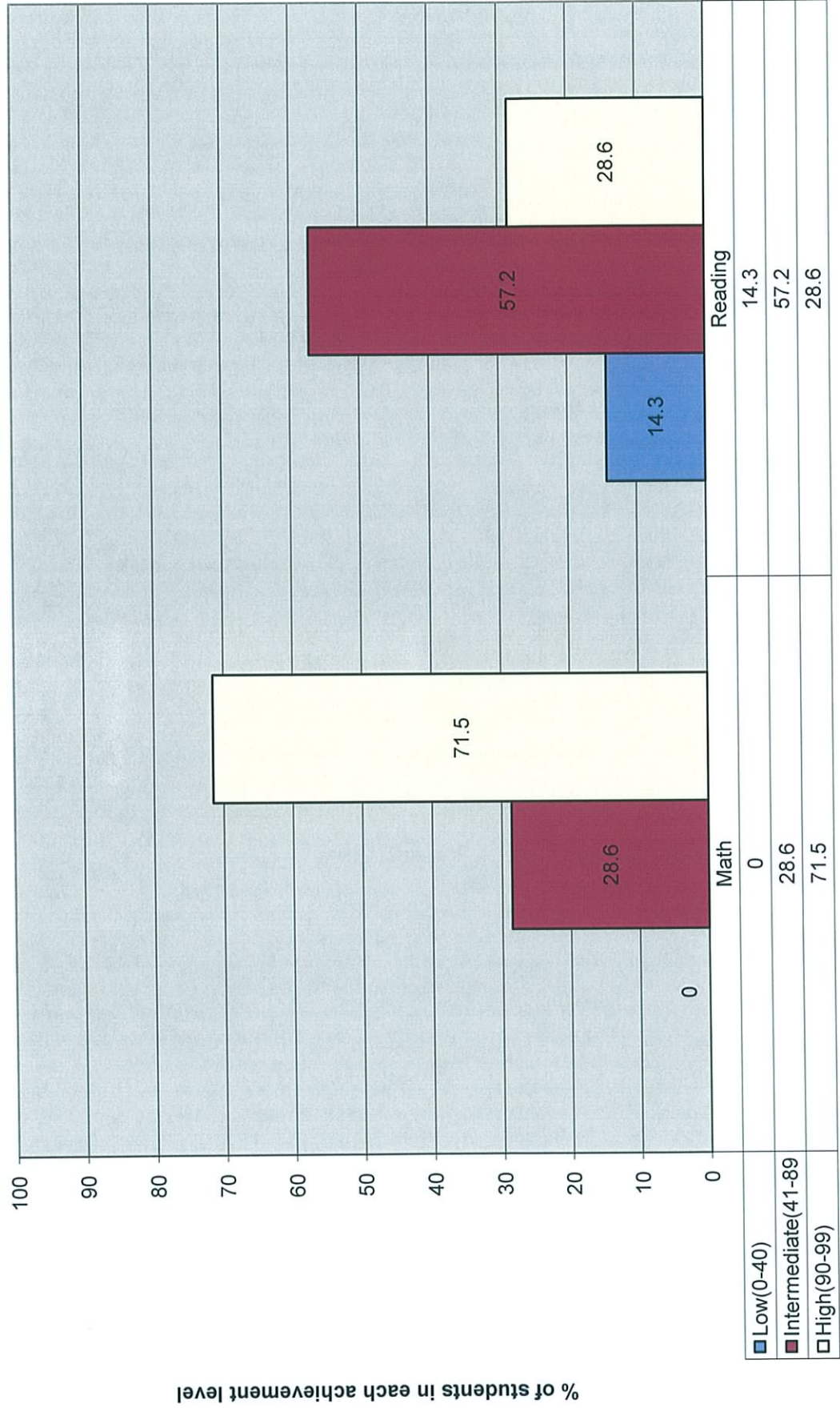
Early Intervention Goal

The early intervention goal at Albert City-Truesdale is: Students in grades K-3 will continue to maintain low student to adult ratio with the utilization of certified and non certified personnel.

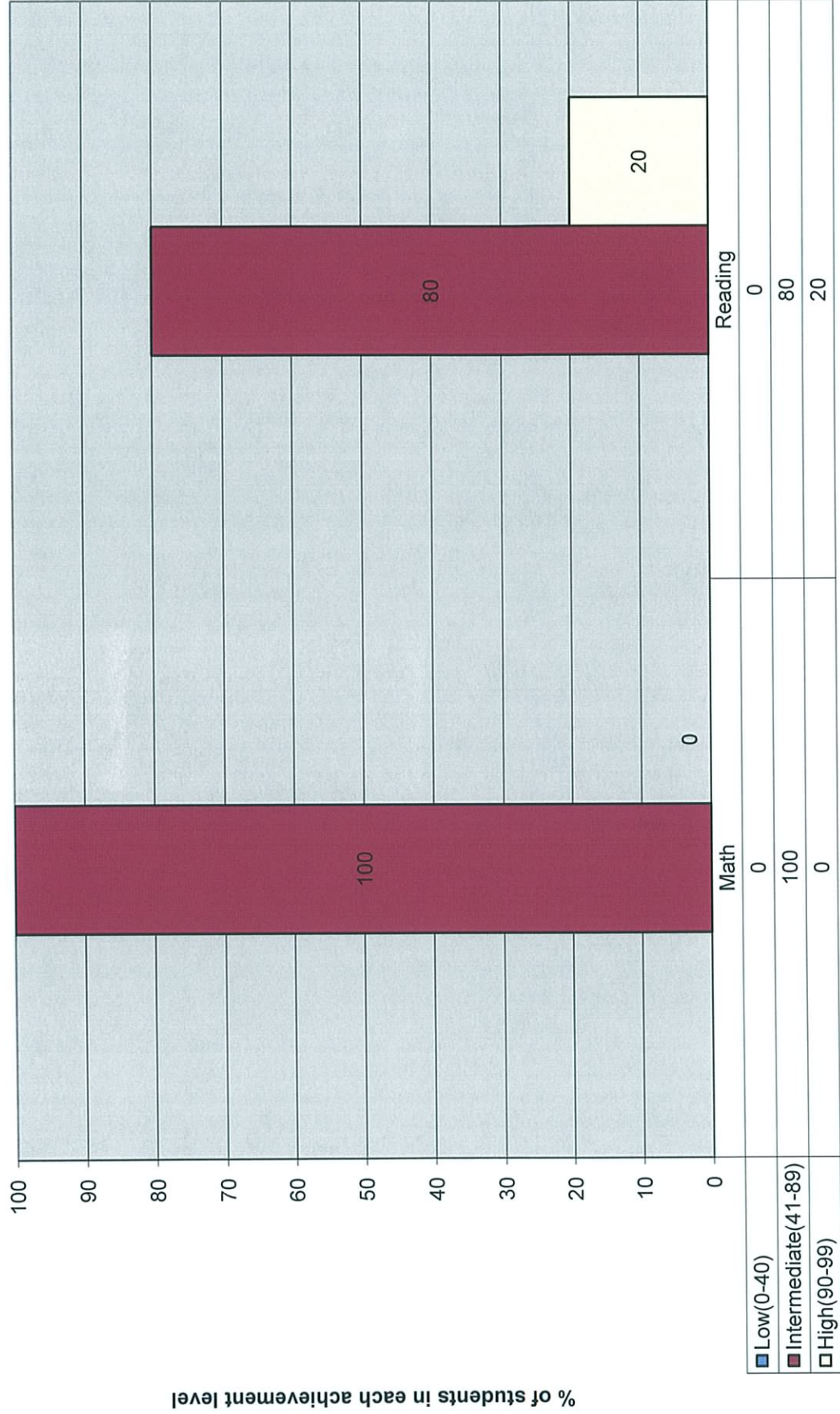
2010-2011 2nd Grade Proficiency Levels



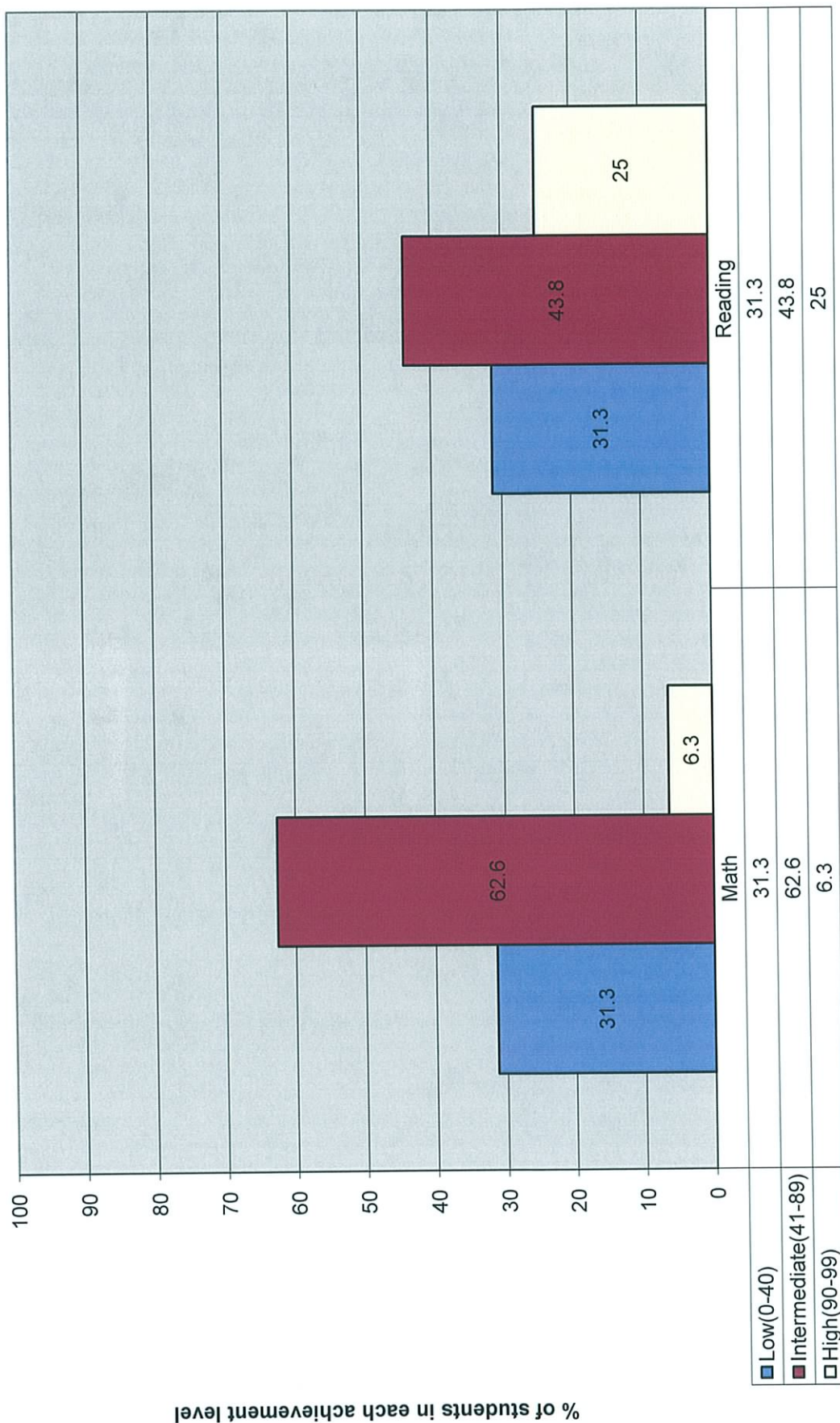
2010-2011 3rd Grade Proficiency Levels



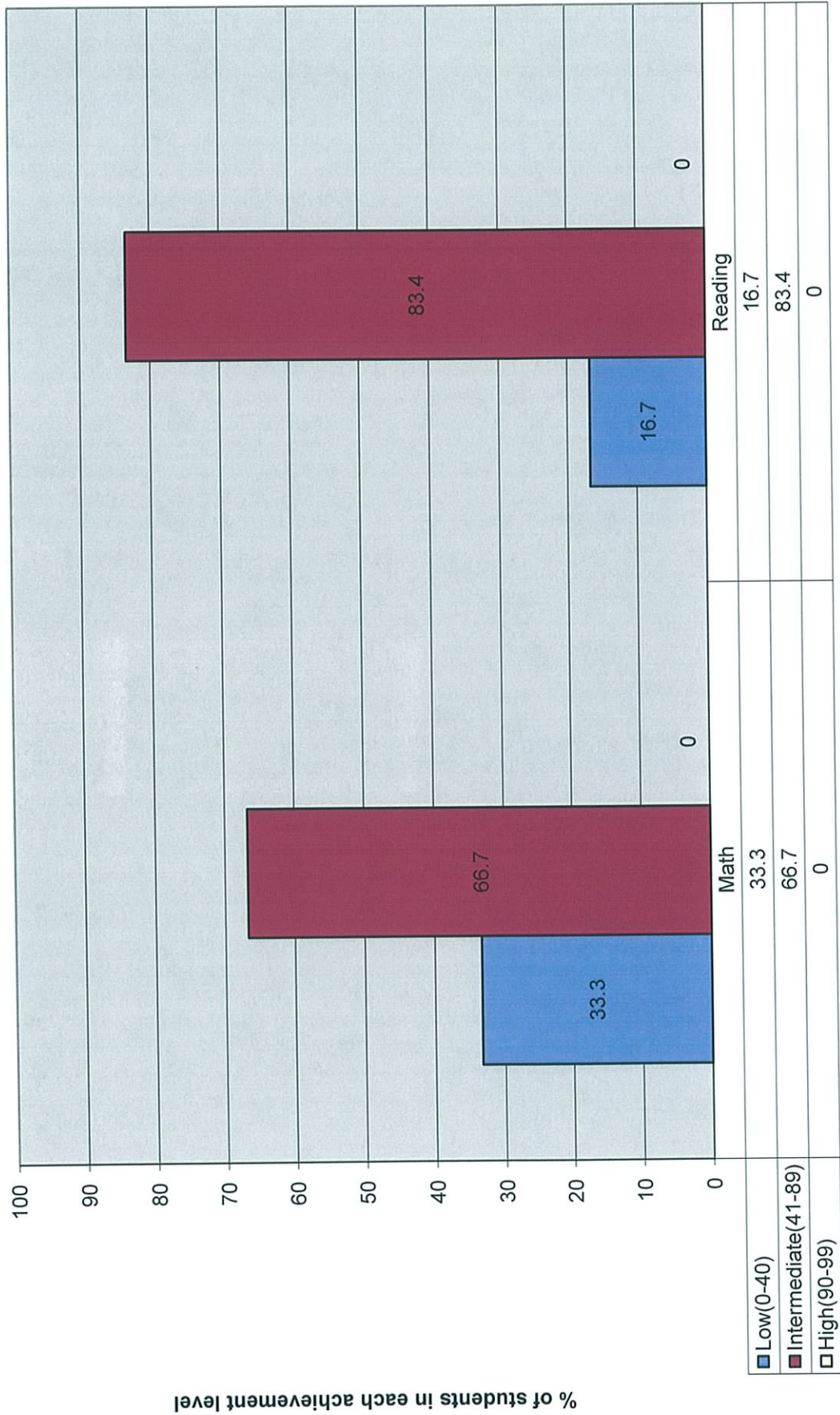
2010-2011 4th Grade Proficiency Levels



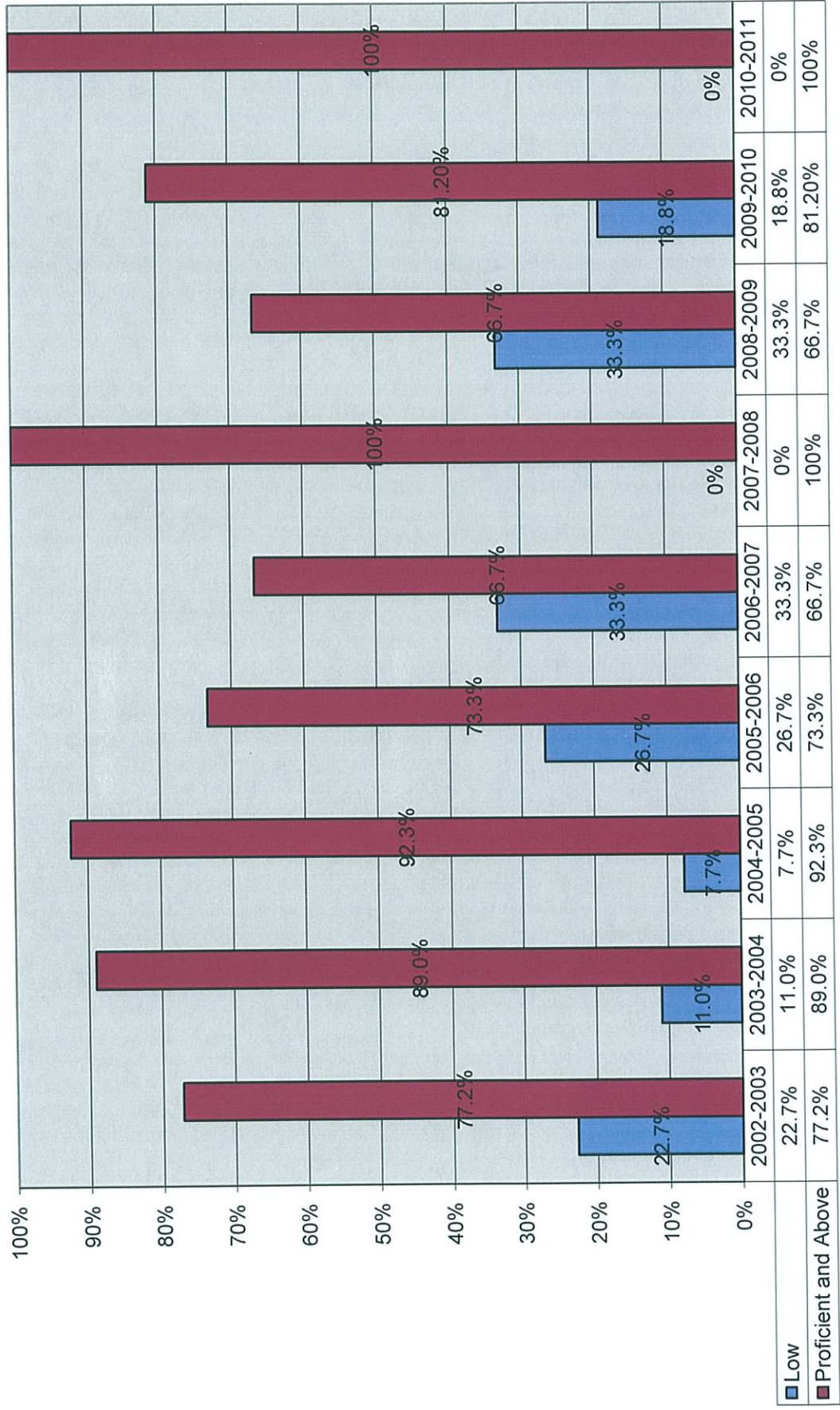
2010-2011 5th Grade Proficiency Levels



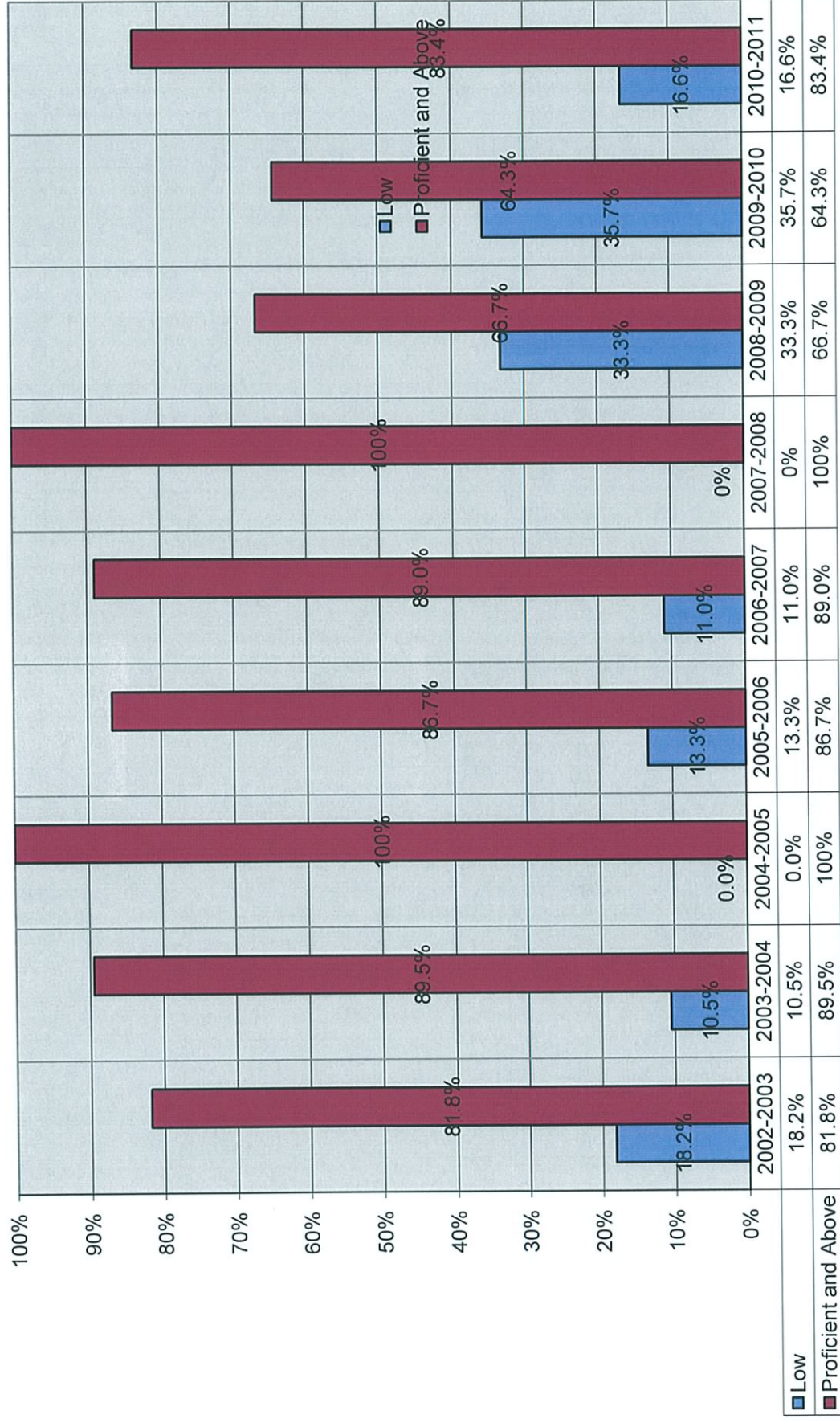
2010-2011 6th Grade Proficiency Levels



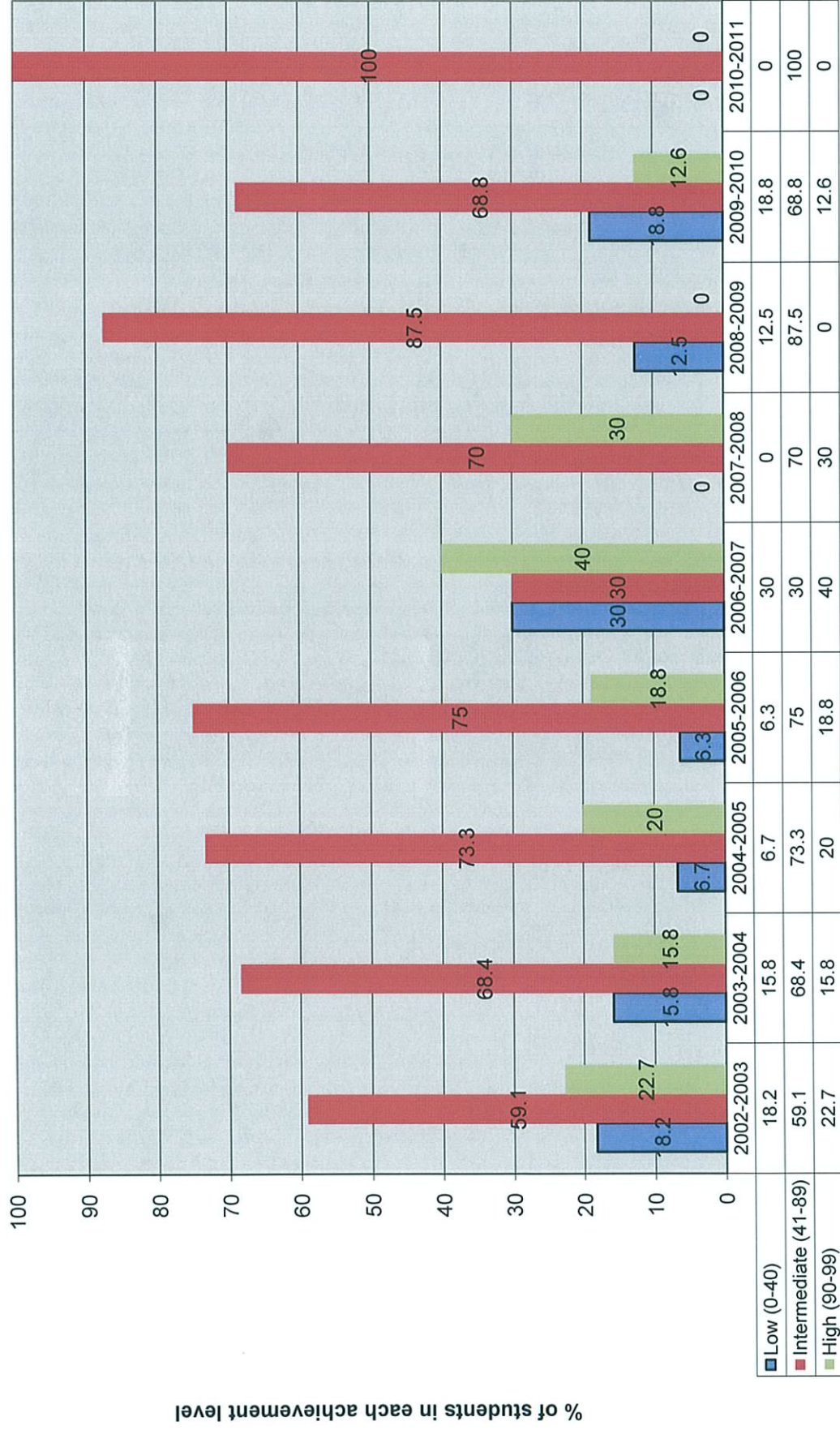
2002-2011 Grade 4 ICAM Reading Comprehension



2002-2011 Grade 4 ICAM Math Problem Solving Strategies and Process



2002-2010 4th Grade ITBS Math Total Comparison



2002-2010 4th Grade ITBS Reading Comprehension Comparison

